

# BURLINGAME WOMAN'S CLUB

## FACILITY RENTAL RATES

Located in the heart of downtown Burlingame Woman's Club offers unique event space for any occasion, including:

- Corporate Events
- Group Meetings
- Parties and Celebrations
- Memorial Services
- Rehearsals & Weddings

## Auditorium Configurations

43' wide x 34' long  
100 round tables  
175 theater setup  
48 classroom setup  
39 U-shaped seating  
54 hollow-square seating

## Included with Rentals

ADA-compliant facility  
High-speed Wi-Fi  
Exclusive access to the facility and outdoor spaces  
Access to the kitchen for prep  
Chairs (175)  
Tables (10 5' rounds, 10 6' rectangles, 18 34" card tables)  
Black tablecloths  
Baby grand piano

## Rental Proceeds

Since its founding in 1907, the Burlingame Woman's Club has focused on community service and supporting local nonprofits. Therefore, funds from Clubhouse rentals go to our community service programs. Rental funds also help maintain the Clubhouse facility, ensuring its legacy in the community.

## Availability & Pricing

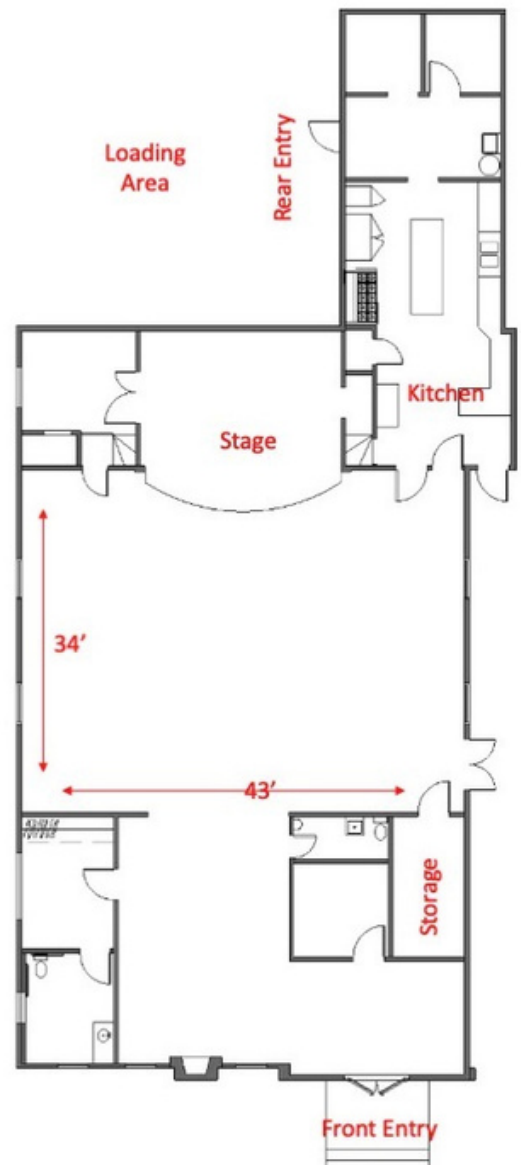
The Burlingame Woman's Club is available for rental year-round, seven days a week. Special pricing is available for nonprofit organizations. Price sheet is on the following page. For information about availability and multi-day, please email us at [BWC94010@gmail.com](mailto:BWC94010@gmail.com).

## Location

Half a block off Burlingame Ave.  
Lots of public parking  
Unloading area behind the building

## Maximum Capacity

100 seated at tables  
175 mingling or theatre setup



# BURLINGAME WOMAN'S CLUB

## FACILITY RENTAL RATES

<u>Facility Rental</u>	<u>Standard Rate</u>	<u>Member/Non-Profit Rate</u>
<b>Monday-Thursday*</b>	<b>4-hour minimum: \$750*</b> 8:00am-12:00pm 1:00pm-5:00pm 6:00pm-10:00pm <b>Full day: \$1,200*</b> 8:00am-5:00pm	<b>4-hour minimum: \$600*</b> 8:00am-12:00pm 1:00pm-5:00pm 6:00pm-10:00pm <b>Full day: \$960.00*</b> 8:00am-5:00pm
<b>Friday• Day Time</b>	<b>4-hour minimum: \$750*</b> 8:00am-12:00pm 1:00pm-5:00pm	<b>4-hour minimum: \$600*</b> 8:00am-12:00pm 1:00-5:00pm
<b>Friday* Evening</b>	<b>4-hour minimum: \$2,000*</b> 6:00pm-10:00pm <b>Additional hours: \$350/hr</b> 10:00pm-12:00am	<b>4-hour minimum: \$1,600*</b> 6:00pm-10:00pm <b>Additional hours: \$350/hr</b> 10:00pm-12:00am
<b>Saturday &amp; Sunday* Day Time</b>	<b>4-hour minimum: \$1,000*</b> 8:00am-12:00pm 1:00pm-5:00pm	<b>4-hour minimum: \$800*</b> 8:00am-12:00pm 1:00pm-5:00pm
<b>Saturday &amp; Sunday* Full Day</b>	<b>Full Day: \$1,600*</b> 8:00am-5:00pm	<b>Full day: \$1,280*</b> 8:00am-5:00pm
<b>Saturday &amp; Sunday* Evening</b>	<b>4-hour minimum: \$2,000*</b> 6:00pm-10:00pm <b>Additional hours: \$350/hr</b> 10:00pm-12:00am	<b>4-hour minimum: \$1,600*</b> 6:00pm-10:00pm <b>Additional hours</b> 10:00pm-12:00am
<b>Friday, Saturday, &amp; Sunday* Buy Out</b>	<b>All Day: \$3,500* All non-member rentals</b> 8:00am-10:00pm <b>Additional hours: \$350/hr</b> 10:00pm-12:00am	<b>All Day: \$3,200* Members only</b> 8:00am-10:00pm <b>Additional hours: \$350/hr</b> 10:00pm-12:00am

**\*plus a \$200 cleaning fee for all rentals**